



# *Essential Validation Services*



## Sample:

---

Client: | Immortelle Therapy  
Sample: | Helichrysum Italicum (Helichrysum Italicum)  
Batch # | #HELIALB 1807  
CAS Number | 90045-56-0  
Type: | Essential Oil

---

## Conclusion:

- No adulterants, diluents, or contaminants were detected via this method.
- This oil meets the expected profile for genuine essential oil of Helichrysum Italicum (Helichrysum Italicum).



X

A handwritten signature in black ink, appearing to read "Adam Christen", is written over a horizontal line.

Validated By:

Essential Validation Services

747 SW 2nd Ave, Gainesville, FL 32601

Phone: 317-361-5044 E-mail: Adam@essentialvalidationservices.com

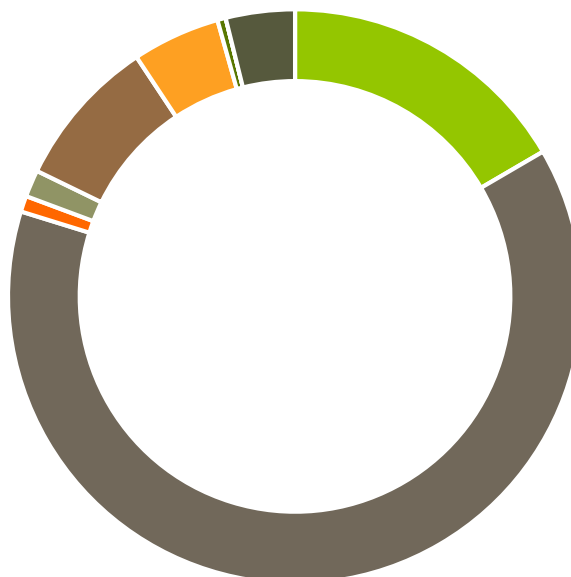
## Summary of Analyses

---

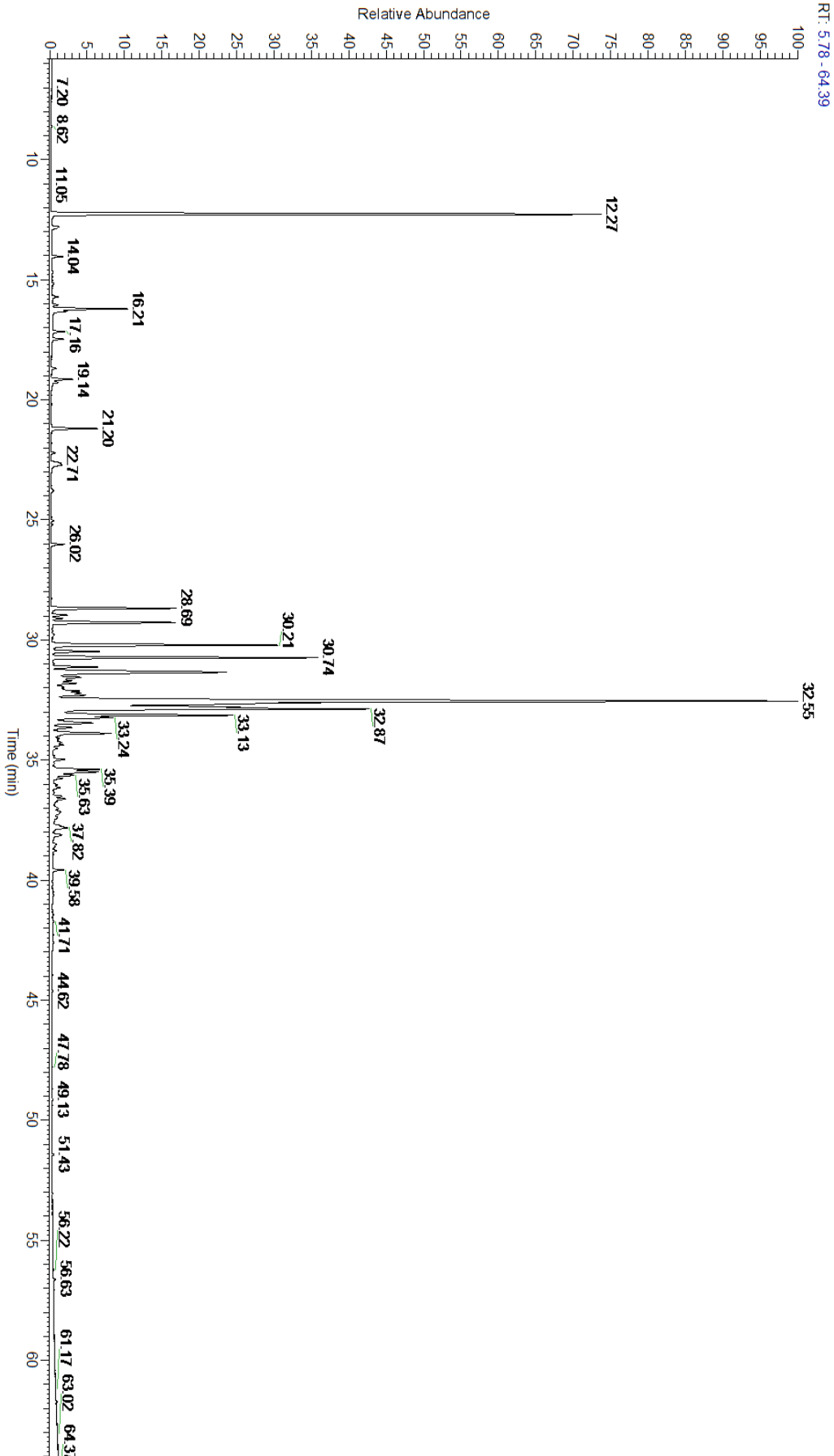
A fresh sample of Helichrysum Italicum (Helichrysum Italicum) Essential Oil (10 uL in .5to.5 mL Hexane + ETOH) was prepared and analyzed via split injection GC/EI-MS.

Main Compounds	Percentages
gamma-Curcumene	20.72%
alpha-Pinene	12.93%
alpha-Selinene	6.62%
ar-Curcumene (Co-Eluting)	6.21%
beta-Caryophyllene	5.76%
Italidione I	5.69%
Italicene	5.21%
beta-Selinene	4.11%
alpha-Muurolene	3.90%
alpha-Copaene	3.06%
Neryl acetate	2.70%
Limonene	1.56%
delta-Cadinene	1.53%

Monoterpenes	Sesquiterpenes	Monoterpenols	Sesquiterpenols	Ketones
16.59%	63.19%	0.90%	1.52%	8.49%
Esters	Ethers	Aldehydes	Phenols	Other
4.95%	0.47%	0.00%	0.00%	3.89%



- Monoterpenes   ■ Sesquiterpenes   ■ Monoterpenols
- Sesquiterpenols   ■ Ketones   ■ Esters
- Ethers   ■ Phenols   ■ Other



Total Percentage		96.11%			
Peak Number	RT	Area %	Compound Name	RI	Chemical Family
1	8.62	0.01%	4-Methyl-3-hexanone	828.50	Aliphatic Ketone
2	12.27	12.93%	alpha-Pinene	936.10	Monoterpene
3	12.80	0.23%	alpha-Fenchene	946.00	Monoterpene
4	14.04	0.21%	beta-Pinene	974.00	Monoterpene
5	14.67	0.02%	Myrcene	989.20	Monoterpene
6	15.15	0.05%	alpha-Phellandrene	1002.00	Monoterpene
7	15.72	0.12%	alpha-Terpinene	1014.00	Monoterpene
8	16.05	0.11%	para-Cymene	1024.30	Monoterpene
9	16.21	1.56%	Limonene	1029.50	Monoterpene
10	16.31	0.28%	1,8-Cineole	1031.80	Monoterpene Ether
11	17.16	0.26%	Isobutyl angelate	1053.75	Aliphatic Ester
12	17.47	0.24%	gamma-Terpinene	1054.00	Monoterpene
13	18.69	0.11%	Terpinolene	1092.10	Monoterpene
14	18.84	0.01%	cis-Sabinene hydrate	1094.50	Monoterpenol
15	19.14	0.47%	Linalool	1099.00	Monoterpenol
16	19.27	0.15%	2-Methylbutyl 2-methylbutyrate	1102.10	Aliphatic Ester
17	21.20	0.93%	Isoamyl tiglate	1152.50	Aliphatic Ester
18	22.21	0.09%	Terpinen-4-ol	1180.57	Monoterpenol
19	22.71	0.33%	alpha-Terpineol	1191.71	Monoterpenol
20	24.86	0.01%	3-Methylamyl angelate	1255.00	Aliphatic Ester
21	28.69	2.70%	Neryl acetate	1362.90	Monoterpene Ester
22	28.96	0.34%	alpha-Ylangene	1371.33	Sesquiterpene
23	29.11	0.22%	Isolatedene	1375.00	Sesquiterpene
24	29.27	3.06%	alpha-Copaene	1379.00	Sesquiterpene
25	30.21	5.21%	Italicene	1401.10	Sesquiterpene
26	30.48	1.00%	cis-alpha-Bergamotene	1411.50	Sesquiterpene
27	30.74	5.76%	beta-Caryophyllene	1427.14	Sesquiterpene
28	30.99	0.02%	gamma-Elemene	1434.00	Sesquiterpene
29	31.13	0.85%	trans-alpha-Bergamotene	1435.00	Sesquiterpene
30	31.35	5.69%	Italidione I	1444.50	beta-Diketone
31	31.56	0.67%	Neryl propionate	1448.50	Monoterpene Ester
32	31.70	0.36%	(Z)-beta-Farnesene	1453.40	Sesquiterpene
33	31.80	0.40%	alpha-Humulene	1461.43	Sesquiterpene
34	31.96	0.12%	gamma-Selinene	1465.50	Sesquiterpene
35	32.04	0.10%	allo-Aromadendrene	1471.00	Sesquiterpene
36	32.29	0.58%	beta-Acoradiene	1475.00	Sesquiterpene
37	32.55	20.72%	gamma-Curcumene	1476.00	Sesquiterpene
38	32.63	6.21%	ar-Curcumene	1480.50	Sesquiterpene
39	32.63	Co-Eluting	Italidione II	1481.50	beta-Diketone
40	32.80	4.11%	beta-Selinene	1487.57	Sesquiterpene
41	32.87	6.62%	alpha-Selinene	1492.50	Sesquiterpene
42	33.13	3.90%	alpha-Muurolene	1500.25	Sesquiterpene
43	33.24	1.14%	beta-Bisabolene	1509.86	Sesquiterpene

